

Serrures et  
paumelles  
Locksets and  
hinges

# LUMIRA VERTICALE

## Caractéristiques techniques

- Pour verre trempé de 8, 10 et 12 mm
- Montage sur encoche V370E
- Avec pêne demi tour et pêne dormant

## Technical features

- For 8-10 and 12 mm thick toughened glass
- To fit notch V370E
- With spring and dead bolt



## LES + PRODUITS

The + product

Grande qualité  
de finition

Résistance à l'usage  
intensif

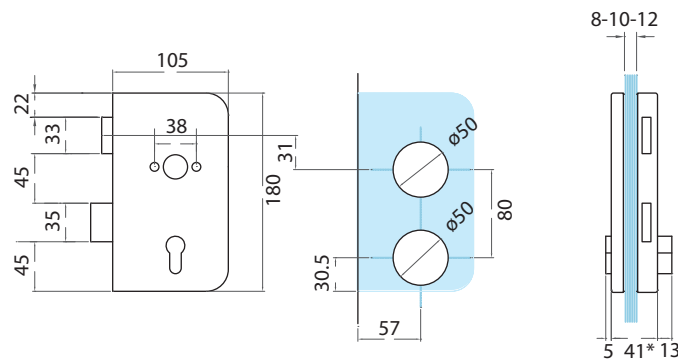
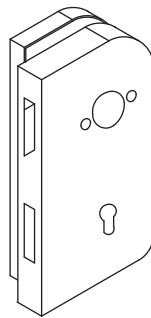
Sécurité accrue

High quality finishes

Resistance  
to heavy use

Increased security

V360



\*=10mm

## Références / References



8-10-12

Aluminium anodisé Argent Brossé  
Brushed anodised alu silver

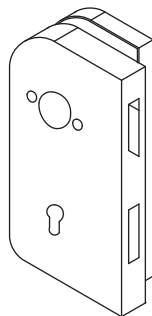
Inox Brossé  
Brushed stainless steel

V360.12

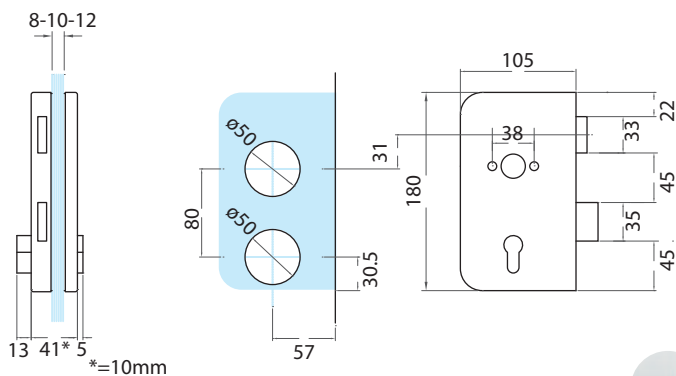
V360.15

Serrure de milieu pour cylindre Européen sans béquille, DIN droite  
Lock for Euro profile cylinder without handles DIN right

V370



Serrures et  
paumelles  
Locksets and  
hinges



Références / References



Aluminium anodisé Argent Brossé  
Brushed anodised alu silver

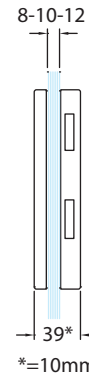
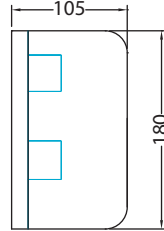
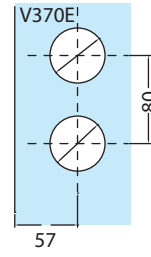
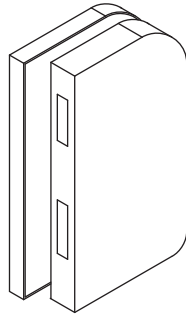
Inox Brossé  
Brushed stainless steel

Serrure de milieu pour cylindre Européen sans béquille, DIN gauche  
Lock for Euro profile cylinder without handles DIN left

V370.12

V370.15

V367



Références / References



Boîtier gâche pour serrure de milieu pour V370 / DIN droite  
Matching patch keep for lock V370 / DIN right

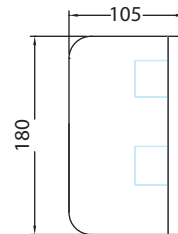
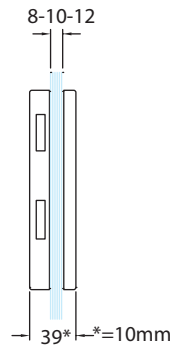
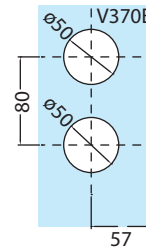
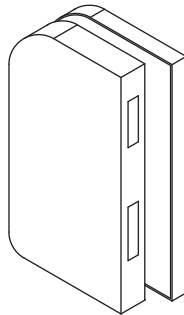
Aluminium anodisé Argent Brossé  
Brushed anodised alu silver

Inox Brossé  
Brushed stainless steel

V367.12

V367.15

V377



Références / References



Boîtier gâche pour serrure de milieu pour V360 / DIN gauche  
Matching patch keep for centre lock V360 / DIN left

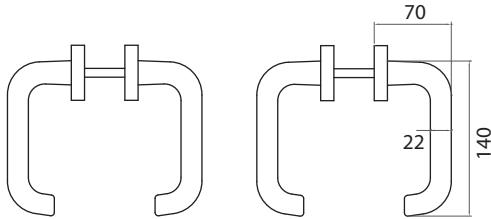
Aluminium anodisé Argent Brossé  
Brushed anodised alu silver

Inox Brossé  
Brushed stainless steel

V377.12

V377.15

V770



Aluminium anodisé Argent Brossé  
Brushed anodised alu silver



Inox Brossé  
Brushed stainless steel

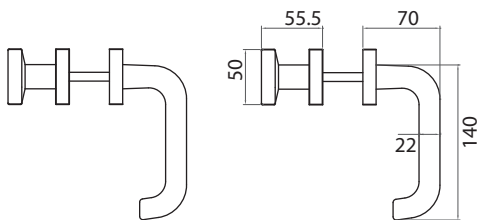
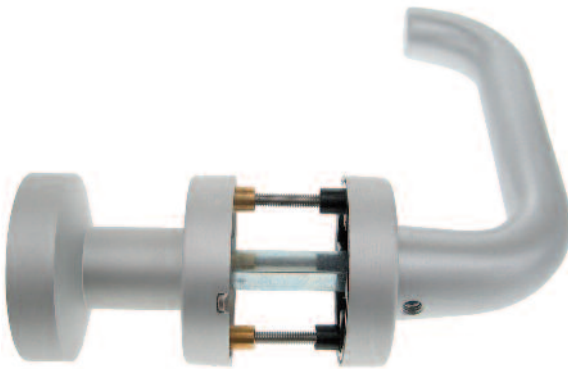
Références / References

Paire de béquilles avec rosace pour V360 et V370  
Pair of lever handles with rosettes for V360 and V370

V770.12

V770.15

V780



Aluminium anodisé Argent Brossé  
Brushed anodised alu silver



Inox Brossé  
Brushed stainless steel

Références / References

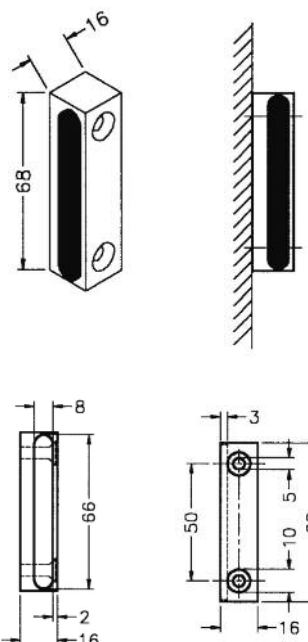
Bouton fixe / béquille pour V360 et V370  
Combination fixed knob / lever handle for V360 and V370

V780.12

V780.15



V533.1



Laiton poli verni  
Polished varnished brass



Aluminium anodisé Argent Brossé  
Brushed anodised alu silver



Chromé brillant  
Bright chromium



Chromé mat brossé  
Brushed matt chromium



Aluminium anodisé Aninox  
Brushed anodised alu.

Références / References

Butée pour serrure de milieu  
Wall stop for lock

V533.1.01

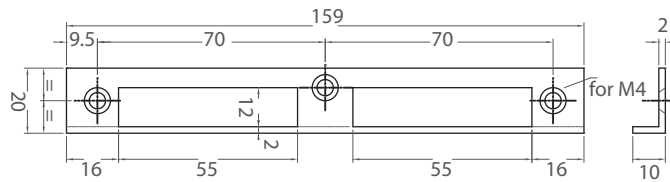
V533.1.12

V533.1.30

V533.1.33

V533.1.36

## V2140



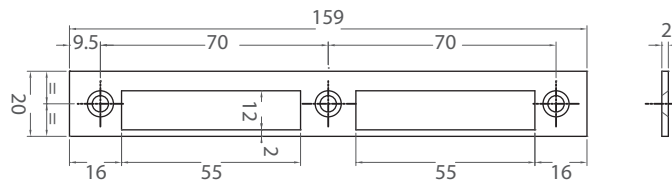
Inox Brossé  
Brushed stainless steel

### Références / References

Gâche forme L pour V360, V361, V370 et V371  
Keep plate L shape for V360, V361, V370, and V371

V2140.15

## V2140.2



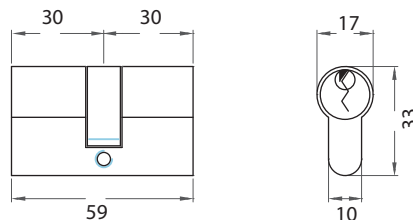
Inox Brossé  
Brushed stainless steel

### Références / References

Gâche pour V360, V361, V370 et V371  
Keep plate for V360, V361, V370 and V371

V2140.2.15

## 4391.00V0



### Références / References

Cylindre Européen 30/30 mm  
Europrofile cylinder 30/30 mm

4391.00V0

## LUMIRA VERTICALE

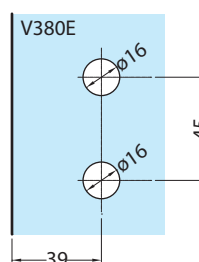
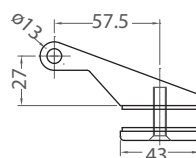
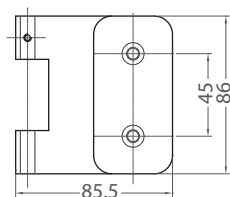
### Caractéristiques techniques

- Pour verre trempé de 8 et 10 mm
- Montage sur encoche V380E
- Poids maximum admissible 45 kg pour 2 paumelles, largeur maximum 1000 mm, pour un poids supérieur nous consulter

### Technical features

- For 8 and 10 mm thick toughened glass
- To fit notch V380E
- Max load 45 kg, maximum width 1000 mm, for 2 hinges please contact us for glass weighing more than 45 kg

V381



### Références / References

Paumelle et fiche pour feuillure de 35 mm  
Hinge and butt for rebate of 35 mm

Aluminium anodisé Argent Brossé  
Brushed anodised alu silver

V381.12

Inox Brossé  
Brushed stainless steel

V381.15